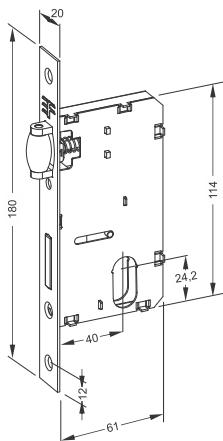
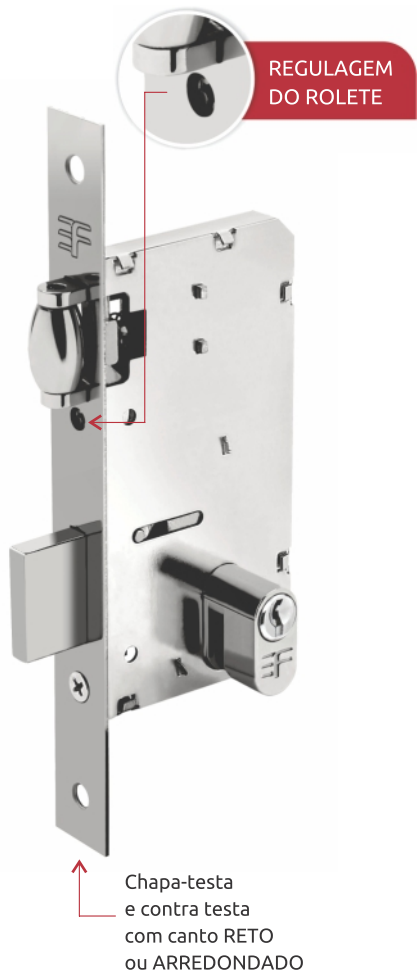
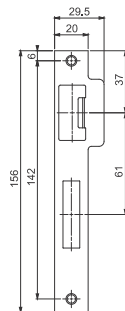


# LINHA ROLETE

## Fechadura Residencial Trinco Rolete Porta Pivotante

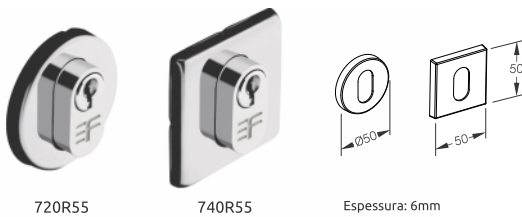


### CONTRA TESTA



**!** **CONTRA TESTA**  
A fechadura acompanha  
02 contra testas:  
ESQUERDA e DIREITA

### ROSETA INOX



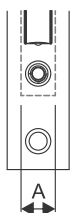
### ROSETA ZAMAC 7000



**ROSETAS**  
Broca 40 - Cilindro Monobloco 55/74/90mm  
Atende a norma ABNT/NBR 14913

**MAIOR RESISTÊNCIA / MAIOR DURABILIDADE**  
· Rolete e Cilindro CROMADOS  
· Contra testa e Chapa-testa de AÇO INOX  
· Chave, Rolete, Pino e Contra-pino de LATÃO

\* Roseta de AÇO CARBONO nos acabamentos AT/OX



**ESPESSURA DA MÁQUINA (A)**  
14,5mm

### ESPESSURA MÁXIMA DA PORTA

CILINDRO	ROSETA ZAMAC	ROSETA ESTAMPADA
55mm	35mm	35mm
74mm	55mm	55mm
90mm	70mm	70mm

- Preto Fosco **NOVO**
- Antique / Oxidado
- Rosé **NOVO**
- Latonado Oxidado
- Cromo Acetinado
- Pintado Branco
- Cromado / INOX